

# Feiten en Cijfers

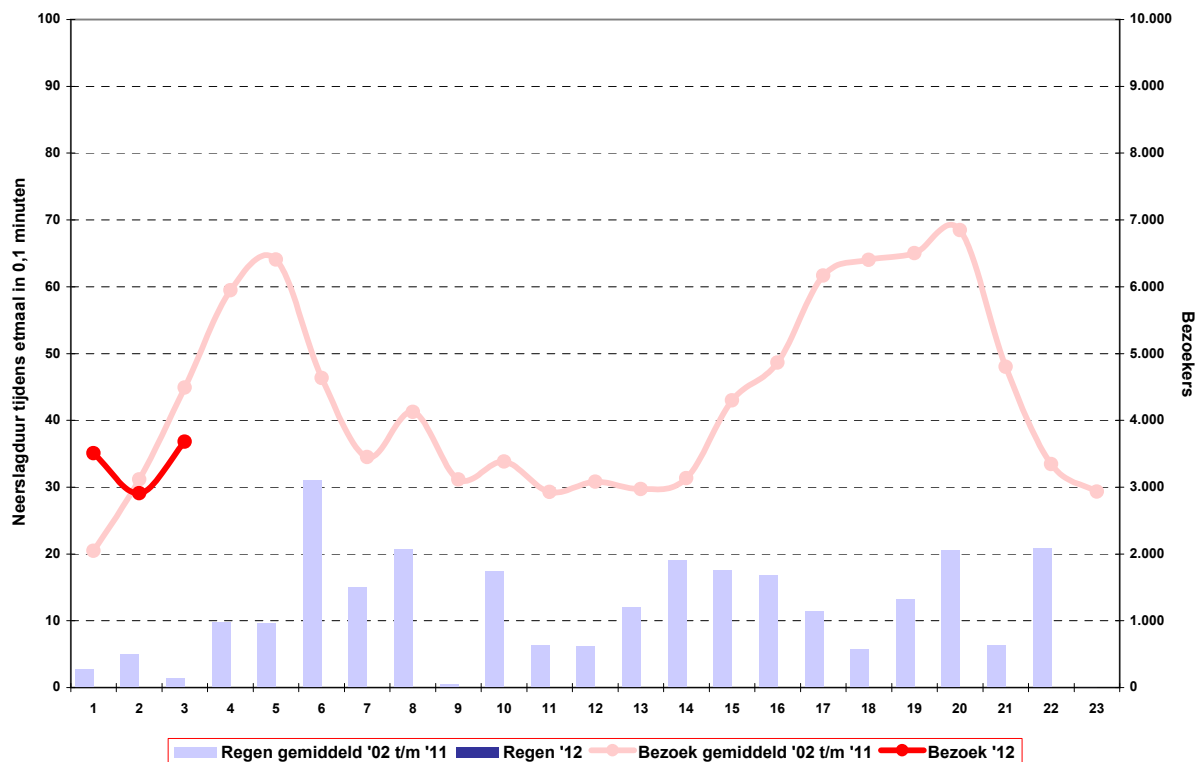
## BEZOEKERSAANTAL

marktdag	seizoen										data 2012		
	2002	2003	2004	2005	2006	2007	2008*	2009	2010	2011		2012**	
Oa							1.999						
Ob							2.142						
1	2.058	1.358	2.020	1.888	1.933	2.688	2.245	1.773	3.078	1.425	3.507	06-apr	
2	2.303	2.075	4.090	2.146	5.045	2.833	2.703	4.355	3.140	2.448	2.907	13-apr	
3	4.885	4.240	3.838	2.690	7.415	4.398	4.150	4.170	3.620	5.488	3.681	20-apr	
4	4.172	6.218	5.763	6.550	4.548	4.300	7.038	6.753	7.038	7.083		27-apr	
5	8.380	7.486	4.053	5.740	7.485	5.288	9.758	7.113	3.179	5.560		04-mei	
6	7.198	6.228	2.303	5.756	3.345	2.828	4.503	4.065	4.571	5.550		11-mei	
7	1.840	2.743	3.178	2.960	2.345	4.765	2.481	3.031	8.363	2.795		18-mei	
8	3.003	6.741	5.080	2.658	5.079	2.365	4.010	6.658	3.088	2.588		25-mei	
9	3.068	5.598	2.955	3.660	3.125	2.830	2.528	2.775	2.878	1.725		01-jun	
10	2.288	2.520	3.444	3.864	2.413	3.153	2.860	2.473	4.123	6.675		08-jun	
11	2.651	3.048	3.903	2.748	3.338	1.713	2.935	3.485	2.766	2.681		15-jun	
12	2.608	4.073	2.573	2.680	3.668	3.435	2.933	3.330	2.453	3.073		22-jun	
13	3.102	2.923	3.622	2.680	3.683	2.195	2.715	2.983	3.098	2.730		29-jun	
14	4.260	2.530	2.200	2.043	3.673	2.243	4.470	3.083	3.258	3.570		06-jul	
15	5.872	3.778	4.106	3.156	5.203	4.633	4.598	2.604	4.650	4.360		13-jul	
16	5.430	4.853	4.822	4.753	5.745	4.140	5.148	5.562	3.233	4.948		20-jul	
17	6.378	7.168	5.715	4.911	5.403	6.640	6.500	5.808	7.628	5.530		27-jul	
18	6.710	4.753	6.513	5.828	4.758	6.878	4.978	8.923	7.500	7.185		03-aug	
19	6.028	5.053	7.223	5.331	5.191	7.063	6.648	6.728	7.760	8.008		10-aug	
20	7.428	6.535	6.157	7.293	5.695	5.883	6.738	7.220	7.195	8.318		17-aug	
21	4.618	5.288	1.873	5.623	2.690	4.040	5.565	6.085	5.673	6.568		24-aug	
22	2.980	3.402	3.294	4.105	2.818	3.510	3.753	4.435	2.800	2.343		31-aug	
23	2.455	3.795	2.935	2.688	2.603	2.570	2.543	3.005	3.620	3.095		07-sep	
<b>Totaal</b>	<b>99.715</b>	<b>102.406</b>	<b>91.660</b>	<b>91.751</b>	<b>97.201</b>	<b>90.391</b>	<b>105.941</b>	<b>106.417</b>	<b>104.712</b>	<b>103.746</b>	<b>10.095</b>		

\* twee extra marktdagen i.v.m. vroege pasen

\*\* per 2012 nieuwe telmethode

Bezoekersaantallen en regenduur tijdens kaasmarkt, seizoen 2012 vergeleken met 2002-2011 gemiddeld



Bron: KNMI, O&S

